

# MILE MARKER

COMBAT PROVEN. CUSTOMER DRIVEN.



**NEW!**



**MISSION SERIES**



**RECOVERY GEAR**



**ACCESSORIES**



**CUSTOM HUBS**

**2022-2023  
PRODUCT CATALOG**



## TABLE OF CONTENTS

**5 JEEP/TRUCK/SUV  
WINCHES**

**10 TRAILER & UTILITY  
WINCHES**

**11 POWERSPORTS  
WINCHES**

**14 HYDRAULIC  
WINCHES**

**23 MOUNTING  
SYSTEMS**

**28 RECOVERY GEAR**

**30 WINCH  
ACCESSORIES**

**33 TRANSFER CASE  
CONVERSION KITS**

**34 PREMIUM LOCKING  
HUBS**

**35 HUB APPLICATION  
GUIDE**

**37 WARRANTY**



**MILE MARKER**  
COMBAT PROVEN. CUSTOMER DRIVEN.



**YOUR GEAR, YOUR WAY!**

**PREMIUM HUBS**



**SHACKLES**



**RHINO PULL**



**CUSTOM WINCHES,  
ROPES, AND ACCESSORIES**

MILEMARKER.COM



# RHINO 1000 PULL PORTABLE ELECTRIC WINCH™



## BENEFITS:

- Pulls or lifts up to 1000 lbs.
- 39' Synthetic Rope
- Wired and Wireless remote
- Variable speed
- 2.0Ah Rechargeable Lithium battery (Extra batteries available)
- Brushless motor
- LED display
- Wide range of accessories
- Available charging dock
- Available cigarette lighter adapter

## THE RIGHT TOOL FOR THE RIGHT JOB

The all-new Mile Marker Rhino Pull 1000 will give you the power to pull items anywhere you need to, including the garage, workshop, the farm, and the field. This ergonomically designed tool features 39' of synthetic rope, a variable speed speed hand controller, a wireless control that can work up to 50' away, and a corded remote. Featuring an LED display to provide feedback, a brushless motor with digital controlled modules, DC 24V 2.0Ah lithium battery with power indicator LED lights, AC charger 30V 2000mA, and it is lightweight at 16.8 lbs.

## SPECIFICATIONS:

Rated Line Pull	1000 lbs. (454 kg)
Battery Power Supply	24V DC
Synthetic Rope	5mm X 12 m
Battery	Lithium Battery
Battery Capacity	2.0Ah
Battery Charger Input	100-240V AC 50-60 Hz 75W
Battery Charger Output	30 V = 2000 mA
Dimensions	24" X 10" X 10.5" (610 mm X 256 mm X 267 mm)
Net Weight	16.8 LB (7.6 kg)
Part Number	71-1000

Learn More



[@MileMarkerWinch](https://www.MileMarkerWinch.com)  
[MileMarker.com](https://www.MileMarkerWinch.com)

**RHINO**  
1000  
**PULL**  
PORTABLE ELECTRIC WINCH™



**ACCESSORIES**



Rhino Snatch Block  
PN: 60-50100



Rhino Pull Case  
PN: 30-71-C1



Rhino Pull Bag  
PN: 30-71-B1



12V. Car Charger  
PN: 71-1000-72



Rhino Strap  
PN: 19108



3/8" & 5/8"  
Shackles  
PN: 60-50138  
PN: 60-50158



Rhino Power Station  
PN: 71-1000-70

**REPLACEMENT PARTS**



Synthetic Rope  
PN: 71-1000-39



Remote Wire  
PN: 71-1000-45



Wall Charger  
PN: 71-1000-43



Battery  
PN: 71-1000-29



Hook Strap  
PN: 19-50042B



Wireless Remote  
PN: 71-1000-44



# ALL NEW MISSION SERIES



## 12V ELECTRIC WINCH FOR TRUCKS/SUV/JEEPS/BRONCOS

The U.S. Military has trusted our winches over three decades... *now you can too!*

### FEATURES:

- Modern and customizable look (over 10 OEM colors and 4 other designs!)
- Available in 8, 10, and 12K capacities
- Fully Submersible
- Automatic load holding/ low friction brake
- Rugged heavy-duty solenoid
- 92' synthetic rope
- Aluminum hawse fairlead
- Military grade drum
- Future smart phone app compatible
- Wireless remote kit available
- Durable corrosion resistant stainless accents



### FULL SPECS

### 8K

### 10K

### 12K

Rated Line Pull	8000 lbs (3632 kg)	10000 lbs (4536 kg)	12000 lbs (5445 kg)
Gear Train	3 Stage planetary	3 Stage planetary	3 Stage planetary
Motor	Series wound, 4.7 hp (3.5 kw), 12 Volt, 24 Volt available	Series wound, 4.7 hp (3.5 kw), 12 Volt, 24 Volt available	Series wound, 4.7 hp (3.5 kw), 12 Volt, 24 Volt available
Remote	Power in, Power out with 12' cable (3.7 m)	Power in, Power out with 12' cable (3.7 m)	Power in, Power out with 12' cable (3.7 m)
Dimensions (LxWxH)	21.1" X 6.34" X 10.1" (535 mm X 161 mm X 255 mm)	21.1" X 6.34" X 10.1" (535 mm X 161 mm X 255 mm)	21.1" X 6.34" X 10.1" (535 mm X 161 mm X 255 mm)
Synthetic Rope	5/16" X 92' (7.9 mm X 28 m) (13,228 lb. breaking strength)	3/8" X 92' (9.53 mm X 28 m) (18,078 lb. breaking strength)	3/8" X 92' (9.53 mm X 28 m) (18,078 lb. breaking strength)
Net Weight Synthetic Rope	57.3 lbs (25.9 kg)	57.8 lbs (26.2 kg)	57.8 lbs (26.2 kg)
Drum Size Diameter X length	2.48" X 8.35" (63 mm X 212 mm), hardened	2.64" X 8.35" (67 mm X 212mm), hardened	2.64" X 8.35" (67 mm X 212 mm), hardened
Bolt Pattern	4 bolt pattern, 10" x 4.5" (254 mm X 114.3 mm)	4 bolt pattern, 10" x 4.5" (254 mm X 114.3 mm)	4 bolt pattern, 10" x 4.5" (254 mm X 114.3 mm)



# MISSION

SERIES



**MILE  
MARKER**

COMBAT PROVEN. CUSTOMER DRIVEN.

# JEEP/TRUCK/SUV WINCHES

**SUBMERSIBLE SOLENOID**  
Marine grade connections at the remote control plug and socket

**STAINLESS STEEL**  
Bolts and fasteners to prevent exterior corrosion even in the smallest places



## ALL WEATHER WINCHING

Our completely sealed, fully submersible winch is a design that can truly spite the weather. A winch at its core is a tool, waiting for its call to action. Wherever you off-road, our waterproof winches will always be ready to perform. No rusting, no corroding, no pitting.

## STRENGTH, PERFORMANCE, VALUE

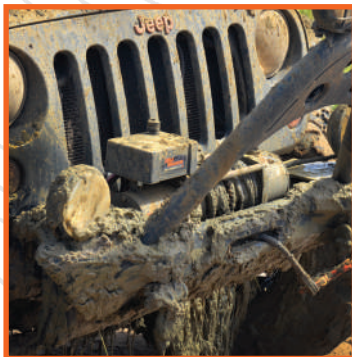
Mile Marker winches define value – both our working range line speeds and our performance are the best in the class. This comes from years of motor tuning and gear ratio development to ensure high quality performance across the electric winch line.

## CHOOSE THE WINCH FOR YOU

We offer 8,000, 9,500, 12,000 and 15,000 pound units for your off-roading truck, Jeep or SUV. Our 18,000 pound winch's innovative design is perfect for your tow truck or industrial DC applications.



**WATERPROOF**



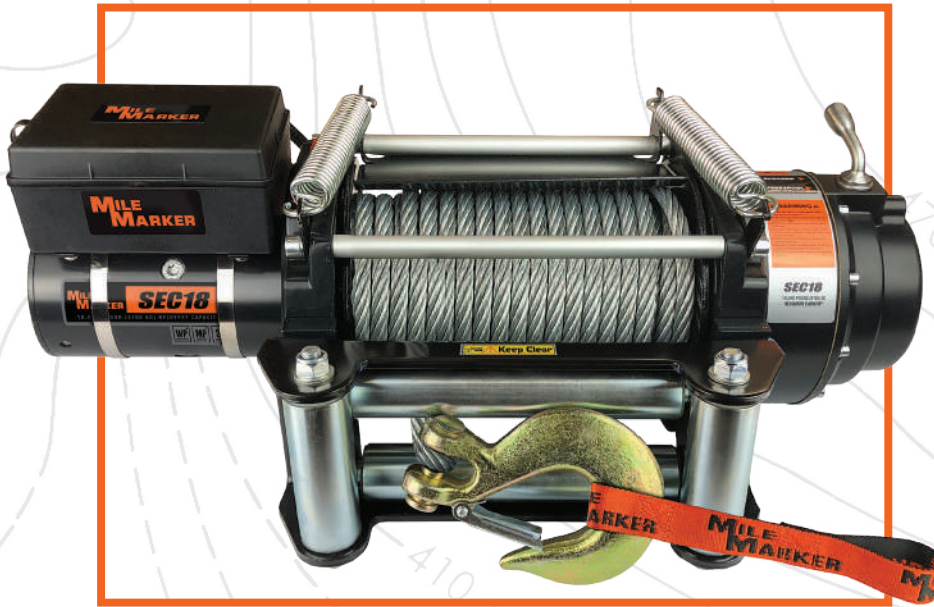
**MUD PROOF**



**SNOW PROOF**



# SEC18



77-50280W

## FEATURES:

- 7.7 HP Series Wound Motor
- Rugged Planetary Gear Sets
- Clockable Gear Housing
- Fast Line Speeds
- Submersible, 400 Amp Solenoid
- Automatic Load Holding Brake
- Corrosion Resistant Stainless Steel Fasteners
- 79' Steel Cable
- Roller Fairlead
- Waterproof
- Handheld Remote Control

## STRONGEST ELECTRIC WINCH

The SEC18 pulls 18,000 pounds of recovery power. This industrial grade winch is perfect for your tow truck, fire truck, utility vehicle, or industrial DC. Our SEC18 is lightweight for its strength and features fast line speeds.

### SPECIFICATIONS (18K):

Rated Line Pull	18000 lbs. (8164 kg)
Gear Train	3 Stage planetary
Gear Ratio	315:1
Motor	12 Volt DC, input power 7.7 hp (5.6 kw) 24 Volt available
Remote	Power in, Power out with 12' cable (3.7 m)
Dimensions (LxWxH)	26" X 8.5" X 8.5" (662 mm X 214 mm X 214 mm)
Steel Cable	1/2" X 79' (12.7 mm X 24 m) (19,505 lb. breaking strength)
Drum Size Diameter x Length	4" X 10" (101.6 mm X 254 mm)
Flange Diameter	9" (228.6 mm)
Net Weight	154 lb. (69.8 kg)
Bolt Pattern	8 bolt pattern Outer 6.5" X 12" (165 mm X 304.8 mm) Inner 4.5" X 12" (114.3 mm X 304.8 mm)

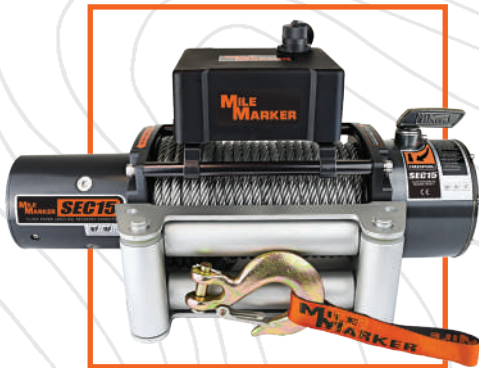
### PERFORMANCE (18K):

Line Pull		Line Speed		Motor Current
lb	kg	fpm (12V)	mpm (12V)	amps @ 12 V
0	0	23.6	7.2	68
6000	2724	10.2	3.1	235
8000	3632	9.2	2.8	282
10000	4540	4.9	1.5	310
12000	5448	3.9	1.2	378
15000	6810	3.3	1	420
18000	8172	2.6	0.8	469

# SEC15

## BIG WINCH POWER, SMALL WINCH WEIGHT

Our 15,000 pound winch packs heavy duty power. The light, compact design mounts easily to a full size truck or Jeep. Each SEC15 includes a 15' recovery strap for longer pulls.



**Steel Cable**

76-50260W

### FEATURES:

- 6.8 HP Series Wound Motor
- Rugged Planetary Gear Sets
- Clockable Gear Housing
- Fast Line Speeds
- Submersible, 400 Amp Solenoid
- Automatic Load Holding Brake
- Corrosion Resistant Stainless Steel Fasteners
- 79' Steel Cable or 72' Synthetic Rope
- Aluminum Hawse or Roller Fairlead
- Waterproof
- Handheld Remote Control
- Includes 15' Recovery Strap



**Synthetic Rope**

76-53260W

### SPECIFICATIONS (15K):

Rated Line Pull	15000 lbs (6803 kgs)
Gear Train	3 Stage planetary
Gear Ratio	294:1
Motor	Series wound, 6.8 hp (5 kw), 12 Volt 24 Volt available
Remote	Power in, Power out with 12' cable (3.7 m)
Dimensions (LxWxH)	22" X 6.3" X 8.3" (558 mm X 160 mm X 211 mm)
Steel Cable	25/64" X 79' (10 mm X 24 m) (16,409 lb. breaking strength)
Synthetic Rope	25/64" X 72' (10 mm X 22 m) (18,078 lb. breaking strength)
Drum Size Diameter x Length	2.9" X 8.9" (75 mm X 226 mm)
Net Weight Synthetic Rope	63 lbs (28.5 kgs)
Net Weight Steel Cable	85 lbs (38.5 kgs)
Bolt Pattern	4 bolt pattern, 4.5" x 10" (114.3 mm X 254 mm)

### PERFORMANCE (15K):

Line Pull	Line Speed		Motor Current amps @ 12 V		
	lb	kg		fpm	mpm
0	0		16.7	5	120
4000	1816		12	3.7	202
6000	2724		10.5	3.2	225
8000	3632		9.2	2.8	250
10000	4540		7.9	2.4	310
12000	5448		6.6	2	355
15000	6810		5.9	1.8	420



**LIGHTEST, MOST COMPACT 15K WINCH IN THE INDUSTRY**



**INCLUDES 15' RECOVERY STRAP**

# SEC12 & SEC95

## PROVEN WINCH DESIGN, UNMATCHED VALUE

Heavy duty series wound motors and rugged planetary gear sets are the backbone of Mile Marker. With robust controls and a fully sealed solenoid and body, the SEC12 and SEC95 are proven winches at an unmatched value.



\*Steel Cable 76-50251BW  
Synthetic Rope 76-53251BW



\*Steel Cable 76-50246BW  
Synthetic Rope 76-53246BW

### SPECIFICATIONS (12K):

Rated Line Pull	12000 lbs (5443 kg)
Gear Train	3 Stage planetary
Gear Ratio	294:1
Motor	Series wound, 4.9 hp (3.6 kw), 12 Volt, 24 Volt available
Remote	Power in, Power out with 12' cable (3.7 m)
Dimensions (LxWxH)	20.8" X 6.3" X 7.8" (528 mm X 161 mm X 200 mm)
Steel Cable	3/8" X 100' (9.5 mm X 30.5 m) (14,400 lb. breaking strength)
Synthetic Rope	3/8" X 92' (9.5 mm X 28 m) (18,078 lb. breaking strength)
Drum Size Diameter X Length	2.6" X 8.3" (67 mm X 212 mm)
Net Weight Synthetic Rope	48 lbs (30.3 kg)
Net Weight Steel Cable	67 lbs (41.7 kg)
Bolt Pattern	4 bolt pattern, 4.5" x 10" (114.3 mm X 254 mm)

### PERFORMANCE (12K):

Line Pull	Line Speed	Motor Current
lb kg	fpm mpm	amps @ 12 V
0 0	16.4 5	85
4000 1816	8.8 2.7	160
6000 2724	7.5 2.3	191
8000 3632	6.7 2	235
10000 4540	5.6 1.7	270
12000 5448	4.9 1.5	320

### SPECIFICATIONS (9.5K):

Rated Line Pull	9500 lbs (4309 kg)
Gear Train	3 Stage planetary
Gear Ratio	210:1
Motor	Series wound, 4.9 hp (3.6 kw), 12 Volt, 24 Volt available
Remote	Power in, Power out with 12' cable (3.7 m)
Dimensions (LxWxH)	20.8" X 6.3" X 7.8" (528 mm X 161 mm X 200 mm)
Steel Cable	3/8" X 100' (9.5 mm X 30.5 m) (14,400 lb. breaking strength)
Synthetic Rope	3/8" X 92' (9.5 mm X 28 m) (18,078 lb. breaking strength)
Drum Size Diameter X Length	2.64" X 8.7" (67 mm X 222mm )
Net Weight Synthetic Rope	48 lbs (30.3 kg)
Net Weight Steel Cable	67 lbs (41.7 kg)
Bolt Pattern	4 bolt pattern, 4.5" x 10" (114.3 mm X 254 mm)

### PERFORMANCE (9.5K):

Line Pull	Line Speed	Motor Current
lb kg	fpm mpm	amps @ 12 V
0 0	21 6.4	86
2000 908	11 3.4	150
4000 1816	8.8 2.7	205
6000 2724	7.5 2.3	235
8000 3632	6 1.8	252
9500 4313	4.3 1.3	330

### FEATURES:

- 4.9 HP Series Wound Motor
- Rugged Planetary Gear Sets
- Clockable Gear Housing
- Fast Line Speeds
- Submersible, 400 Amp Solenoid
- Automatic Load Holding Brake
- Corrosion Resistant Stainless Steel Fasteners
- 100' Steel Cable or 92' Synthetic Rope
- Aluminum Hawse or Roller Fairlead
- Waterproof
- Handheld Remote Control

# SEC8

## WORKING RANGE PERFORMANCE

The SEC8 is light and affordable for the standard off road vehicle. With robust controls and a fully sealed solenoid and body, Mile Marker redefines performance in the 8,000 pound winch class.



**Steel Cable**  
77-50141W



**Synthetic Rope**  
77-53141W

### SPECIFICATIONS (8K):

Rated Line Pull	8000 lbs (3629 kg)
Gear Train	3 Stage planetary
Gear Ratio	150:1
Motor	Series wound, 4.9 hp (3.6 kw), 12 V 24 Volt available
Remote	Power in, Power out with 12' cable (3.7 m)
Dimensions (LxWxH)	20.8" X 6.3" X 7.8" (528 mm X 161 mm X 200 mm)
Steel Cable	5/16" X 100' (7.9 mm X 30.5 m) (9,800 lb. breaking strength)
Synthetic Rope	5/16" X 92' (7.9 mm X 28 m) (13,228 lb. breaking strength)
Drum Size Diameter X length	2.5" X 8.3" (63 mm X 222 mm)
Net Weight Synthetic Rope	49 lbs (37 kg)
Net Weight Steel Cable	63 lbs (31.7 kg)
Bolt Pattern	4 bolt pattern, 4.5" x 10" (114.3 mm X 254 mm)

### FEATURES:

- 4.9 HP Series Wound Motor
- Rugged Planetary Gear Sets
- Clockable Gear Housing
- Fast Line Speeds
- Submersible, 400 Amp Solenoid
- Automatic Load Holding Brake
- Corrosion Resistant Stainless Steel Fasteners
- 100' Steel Cable or 92' Synthetic Rope
- Aluminum Hawse or Roller Fairlead
- Waterproof
- Handheld Remote Control

### PERFORMANCE: (8K)

Line Pull		Line Speed		Motor Current
lb	kg	fpm	mpm	amps @ 12 V
0	0	38.1	11.6	70
2000	908	14.1	4.3	136
4000	1816	12.5	3.8	198
6000	2724	9.8	3	264
8000	3632	8.2	2.5	284



# TRAILER & UTILITY WINCHES

## COMPACT SIZE, POWERFUL PULL

The SEC4500 defines fast line speeds and low amperage draw for your large side by side or UTV. The 2000 lb. utility winches features a wireless remote control and a high output motor.



76-50115BW

### FEATURES (4.5K):

- 3.7 HP Series Wound Motor
- Rugged Planetary Gear Sets
- Clockable Gear Housing
- Fast Line Speeds
- Submersible, 250 Amp Solenoid
- Automatic Load Holding Brake
- Corrosion Resistant Stainless Steel Fasteners
- 79' Steel Cable
- Roller Fairlead
- Waterproof
- Handheld Remote Control
- Includes Tow Strap
- Includes Mounting Plate

### SPECIFICATIONS (4.5K):

Rated Line Pull	4500 lbs (2041 kg)
Gear Train	3 Stage planetary
Gear Ratio	150:1
Motor	12 Volt DC, input power 3.7hp (2.7 kw) 24 Volt available
Remote	Power in, Power out with 12' cable (3.7 m)
Dimensions (LxWxH)	17.3" X 6.3" X 7.8" (440 mm X 161 mm X 200 mm)
Steel Cable	1/4" X 79' (6.3 mm X 24 m) (7,000 lb. breaking strength)
Drum Size Diameter X Length	2.5" X 5.5" (63 mm X 140 mm)
Net Weight Steel Cable	49 lbs (23 kg) (with mounting plate)
Bolt Pattern	4 bolt pattern 6.5" X 4.5" (165.9 mm X 114.3 mm)

### PERFORMANCE (4.5K):

Line Pull	Line Speed	Motor Current
lb kg	fpm mpm	amps @ 12 V
0 0	38.1 11.6	70
1500 681	17.1 5.2	125
3000 1362	14.1 4.3	160
4500 2043	11.8 3.6	205



76-50200

### FEATURES (2K):

- High Output Motor
- Automatic Load Holding Dynamic Brake
- Fast Line Speeds
- 50' Steel Cable
- Roller Fairlead
- All Metal Planetary Gearing
- Free Spooling
- Wireless Remote Control

### SPECIFICATIONS (2K):

Rated Line Pull	2000 lbs (907 kg)
Gear Train	2 Stage planetary
Gear Ratio	163:1
Motor	Permanent Magnet 12 Volt 1.9 hp (1.4 kw)
Remote	Wireless remote control
Dimensions (LxWxH)	11.2" X 4.5" X 4.2" (285.5 mm X 113 mm X 107.5 mm)
Steel Cable	5/32" X 50' (4 mm X 15.2 m)
Drum Size Diameter X Length	1.2" X 2.8" (32 mm X 72 mm)
Net Weight	16 lb. (7.2 kg)
Bolt Pattern	2 bolt pattern 1.8" X 3" (48 mm X 76 mm)

### PERFORMANCE (2K):

Line Pull	Line Speed	Motor Current
lb kg	fpm mpm	amps @ 12 V
0 0	14.0 4.3	14
1000 454	9.0 2.7	60
1500 680	7.5 2.3	90
2000 908	5.9 1.8	115

# POWERSPORTS WINCHES

**WATERPROOF**  
Marine grade connectors at the control and solenoid



**HIGH OUTPUT MOTOR**  
These winches pack enough punch to take on the most daunting task

## COMPACT POWER

The Mile Marker Powersports winch line packs powerful recovery into a rugged, compact size. Your ATV or UTV can always rely on our planetary gear systems and high output motor for your most daunting off road pulls. No weather worries with completely sealed units to the IP68 Standard.

## CHOOSE THE WINCH FOR YOU

We offer 5000, 3500, or 2500 pound winches to best suit your vehicle. Equipped with synthetic rope or steel cable.



**FASTEST, MOST POWERFUL**



**RUGGED COMPACT SIZE**

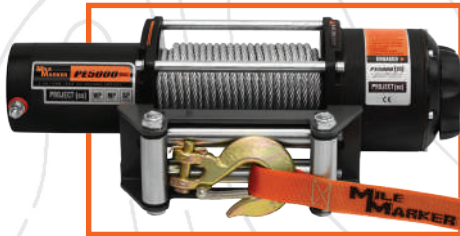


**COMPLETELY ELEMENT SEALED**

# PE5000

## PACK THE POWER

The PE5000 slams raw power into a lightweight, compact design for your ATV/UTV. Metal planetary gear systems and a fully waterproof solenoid lets you winch wherever you ride.



### Steel Cable

77-50120W



### Synthetic Rope

77-53120W

## SPECIFICATIONS (5K):

Rated Line Pull	5000 lbs (2267.9 kg)
Gear Train	3 Stage planetary
Gear Ratio	165:1
Motor	12 Volt DC, input power 3.8hp 24 Volt available
Remote	Power in, Power out with 12' cable (3.7 m)
Winch Dimensions (LxWxH)	15.6" X 4.6" X 4.7" (397 mm X 117 mm X 119.8 mm)
Steel Cable	1/4" X 79' (6.3 mm X 24 m) (5,600 lb. breaking strength)
Synthetic Rope	1/4" X 50' (6.3 mm X 15.2 m) (5,071 lb. breaking strength)
Drum Size Diameter X Length	2" X 5.4" (51 mm X 137.5 mm)
Net Weight Synthetic Rope	19.5 lbs (8.6 kg)
Net Weight Steel Cable	23.7 lbs (10.8 kg)
Bolt Pattern	4 bolt pattern 3" X 6.6" (76 mm X 168 mm)

## FEATURES:

- 3.8 HP Permanent Magnet Motor
- All Metal Planetary Gearing
- Submersible, 250 Amp Solenoid
- Automatic Load Holding Brake
- Center Focused Drum
- Fast Line Speeds
- 79' Steel Cable or  
50' Synthetic Rope
- Aluminum Hawse or Roller Fairlead
- Waterproof
- Handheld Remote Control

## PERFORMANCE (5K):

Line Pull		Line Speed 12V		Motor Current 12V
lbs	kgs	fpm	mpm	amp
0	0	20.7	6.3	34
2000	908	15.1	4.6	135
3000	1362	11.5	4	155
4000	1816	10.5	3.2	210
5000	2270	9.2	2.8	250



# PE3.5 & PE2.5



**PE3.5**  
Steel Cable  
77-50112BW



**PE3.5**  
Synthetic Rope  
77-53112BW



**PE2.5**  
Steel Cable  
77-50105BW

## FEATURES:

- 2.4 HP Permanent Magnet Motor
- All Metal Planetary Gearing
- Submersible, 200 Amp Solenoid
- Automatic Load Holding Brake
- Center Focused Drum
- Fast Line Speeds
- 42' Steel Cable or 50' Synthetic Rope
- Aluminum Hawse or Roller Fairlead
- Waterproof
- Handheld and Handlebar Controls

## SPECIFICATIONS:

Rated Line Pull	PE3.5	3500 lbs (1589 kg)
Rated Line Pull	PE2.5	2500 lbs (1135 kg)
Gear Train	All	2 Stage planetary
Gear Ratio	ALL	242:1
Motor	PE3.5	2.4 hp (1.8 kw), 12 V DC
Motor	PE2.5	2.4 hp (1.8 kw)
Remote	All	Power in, Power out with 12' cable (3.7 m)
Dimensions (LxWxH)	PE3.5	13.5" X 4.5" X 4.3" (344 mm X 116 mm X 108 mm)
Dimensions (LxWxH)	PE2.5	13.2" X 4.6" X 4.3" (334 mm X 116 mm X 108 mm)
Steel Cable	PE3.5	7/32" X 42' (5.5 mm X 12.7 m) (5,600 lb. breaking strength)
Steel Cable	PE2.5	3/16" X 42' (4.7 mm X 12.7 m) (5,600 lb. breaking strength)
Synthetic Rope	PE3.5	7/32" X 50' (5.5 mm X 15.2 m) (5,071 lb. breaking strength)
Drum Size Diameter X Length	ALL	2" X 3.1" (50 mm X 80 mm)
Net Weight Steel Cable	PE3.5	17.3 lbs (7.8 kg)
Net Weight Steel Cable	PE2.5	15.1 lbs (6.8 kg)
Net Weight Synthetic rope	PE3.5	14.3 lbs (6.4 kg)
Bolt Pattern	All	4 Bolt pattern, 4.8" X 3" (124 mm X 76 mm)

## PERFORMANCE: PE3.5

Line Pull	Line Speed	Motor Current		
lb	kg	fpm	mpm	amps @ 12 V
0	0	18	5.5	22
1000	454	14.8	4.5	82
2000	908	12.5	3.8	145
3000	1362	10.8	3.3	225
3500	1589	9.8	3	250

## PERFORMANCE: PE2.5

Line Pull	Line Speed	Motor Current		
lb	kg	fpm	mpm	amps @ 12 V
0	0	23	7	35
1000	454	18	5.5	100
1500	681	16	4.8	128
2000	908	14	4.2	150
2500	1135	12	3.6	190



# HYDRAULIC WINCHES

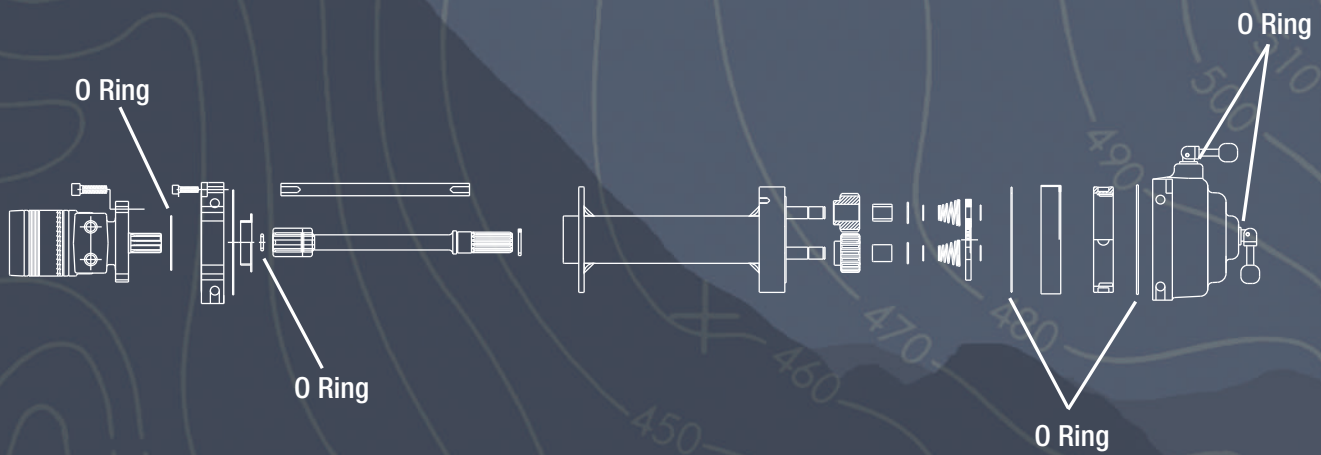


## LEGENDARY POWER

The serious off roaders dream winch, Mile Marker hydraulics utilize the power steering pump as the power source instead of a battery. The result? Continuous winching. Quality winching. Uninterrupted winching. Legendary power.

## CHOOSE THE WINCH FOR YOU

The H and HI series winches run off the power steering of standard vehicles. Choose among 9,000, 10,500 and 12,000 pound capacity winches. For other applications, see our low pressure winch, tow truck winch, and 18K heavy duty and wrecker winch.



## CONSTRUCTION

Internally sealed winches with O rings in every critical spot make all our hydraulics completely element proof. Six seals keep any contaminants outside. Using the relief valve as a built in governor, it is impossible to overload or overwork the pump of your vehicle's power steering, the source of the winch's legendary power.

## INSTALLATION

Vehicle specific adapter kits are required for most applications to connect the winch to the pump (see page 17)



34 SERIES



35 SERIES



BUILT TO LAST



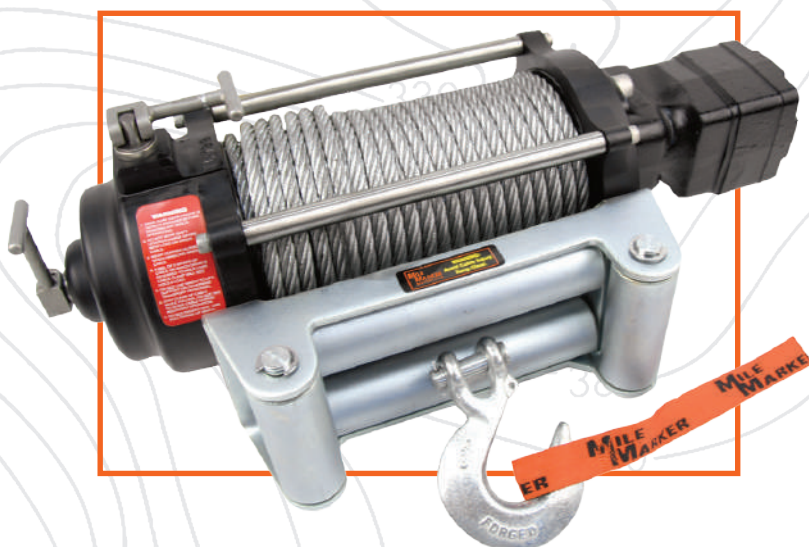
CONTINUOUS USE



ELEMENT PROOF

# H SERIES

Mile Marker's H Series hydraulics mount to either the front or the rear of the vehicle as a permanent or detachable winch. The system is independent from its solenoid control valve to allow for these mounting options. Most applications require a 34 series kit to fit the winch to your vehicle. The kit includes important components for installation.



## H9000

9,000 LB (4082 kg)  
70-50080C

## H10500

10,500 LB (4763 kg)  
70-50050C

## H12000

12,000 LB (5443 kg)  
70-52000C

### FEATURES:

- 100% Duty Cycle
- 2 Speed
- Power Steering Pump Powered
- Submersible
- Stainless Steel Tie Bars and Fasteners
- Ductile Iron Body (H12000 Only)
- Reversible Mounting (H9000 & H10500 Only)
- 3 Mounting Positions (H12000 Only)
- Mechanical Lock
- Corrosion Resistant
- 100' Steel Cable
- Roller Fairlead
- Free Spooling

### SPECIFICATIONS:

<b>Gear Train</b>	Planetary
<b>Gear Ratio</b>	6:1
<b>Motor</b>	9k: 14 cubic inch; 10.5k: 17.9 cubic inch; 12k: 19.5 cubic inch 24V available
<b>Remote</b>	Not included
<b>Steel Cable</b>	3/8" X 100' (9.5 mm X 30.5 m)
<b>Dimensions (LxWxH)</b>	22.5" X 6.5" X 7.8" (571.5 mm X 165.1 mm X 198.1 mm)
<b>Drum Size Diameter X Length</b>	2.5" X 9" (63.5 mm X 228.6 mm)
<b>Power Steering Min. Requirements</b>	3.5 GPM @ 1500 psi (13.2 l/min @ 103.4 bars)
<b>Net Weight</b>	H9000/H10500: 93 lbs (42.2 kgs) H12000: 101 lbs (45.8 kgs)
<b>Bolt Pattern</b>	4 bolt pattern, 4.5" X 10" (114.3 mm X 254 mm)

### PERFORMANCE:

#### 9000

3.5 GPM @ 1500 PSI (13.25 L/m @ 103.4 bars)

Layer of Cable	1	2	3	4
Line speed - low gear (FPM)	6.1	7.4	8.8	10.5
Rated pull (lbs.)	9,000	7,300	6,200	5,400
Line speed - high gear (FPM)	33.6	38.4	48	57
Rated pull (lbs.)	1,500	1,200	1,000	900

#### 10500

3.5 GPM @ 1500 PSI (13.25 L/m @ 103.4 bars)

Layer of Cable	1	2	3	4
Line speed - low gear (FPM)	5.6	6.4	7.4	8.5
Rated pull (lbs.)	10,500	8,500	7,400	6,400
Line speed - high gear (FPM)	31	36	42	48
Rated pull (lbs.)	1,600	1,300	1,200	1,000

#### 12000

3.5 GPM @ 1500 PSI (13.25 L/m @ 103.4 bars)

Layer of Cable	1	2	3	4
Line speed - low gear (FPM)	5.6	6.4	7.4	8.5
Rated pull (lbs.)	12,000	9,400	8,200	7,000
Line speed - high gear (FPM)	31	36	42	48
Rated pull (lbs.)	2,000	1,550	1,350	1,150



34 SERIES ADAPTER KIT MAY BE REQUIRED  
SEE APPLICATION CHART ON PAGE 17

# HI SERIES

The Mile Marker HI Series hydraulic winch is designed for permanent mounting on the front of your vehicle. The solenoid control valve is integrated into the winch. A 35 Series adapter kit is needed to adapt to your power steering system.



## HI9000

9,000 LB (4082 kg)  
75-50085C

## HI10500

10,500 LB (4763 kg)  
75-50050C

## HI12000

12,000 LB (5443 kg)  
75-52000C

### FEATURES:

- 100% Duty Cycle
- 2 Speed
- Power Steering Pump Powered
- Submersible
- Stainless Steel Tie Bars and Fasteners
- Ductile Iron Body (HI12000 Only)
- Reversible Mounting (HI9000 & HI10500 Only)
- 3 Mounting Positions (HI12000 Only)
- Mechanical Lock
- Corrosion Resistant
- 100' Steel Cable
- Roller Fairlead
- Free Spooling
- Handheld Remote Control

### SPECIFICATIONS:

Gear Train:	Planetary
Gear Ratio	6:1
Motor	9k: 14 cubic inch; 10.5k: 17.9 cubic inch; 12k: 19.5 cubic inch 24V available
Remote	Not included
Steel Cable	3/8" X 100' (9.5 mm X 30.5 m)
Dimensions	21.9" X 7.8" HI9000 22.1" X 7.8" HI10500 22.5" X 7.8" HI12000
Drum Size Diameter X Length	2.5" X 9" (63.5 mm X 228.6 mm)
Power Steering Min. Requirements	3.5 GPM @ 1500 psi (13.2 l/min @ 103.4 bars)
Net weight	HI9000/HI10500: 103 lbs (47 kgs) HI12000: 110 lbs (50 kgs)
Bolt Pattern	4 bolt pattern, 4.5" X 10" (114.3 mm X 254 mm)

### PERFORMANCE:

#### 9000

3.5 GPM @ 1500 PSI (13.25 L/m @ 103.4)

Layer of Cable	1	2	3	4
Line speed - low gear (FPM)	6.1	7.4	8.8	10.5
Rated pull (lbs.)	9,000	7,300	6,200	5,400
Line speed - high gear (FPM)	33.6	38.4	48	57
Rated pull (lbs.)	1,500	1,200	1,000	900

#### 10500

3.5 GPM @ 1500 PSI (13.25 L/m @ 103.4)

Layer of Cable	1	2	3	4
Line speed - low gear (FPM)	5.6	6.4	7.4	8.5
Rated pull (lbs.)	10,500	8,500	7,400	6,400
Line speed - high gear (FPM)	31	36	42	48
Rated pull (lbs.)	1,600	1,300	1,200	1,000

#### 12000

3.5 GPM @ 1500 PSI (13.25 L/m @ 103.4)

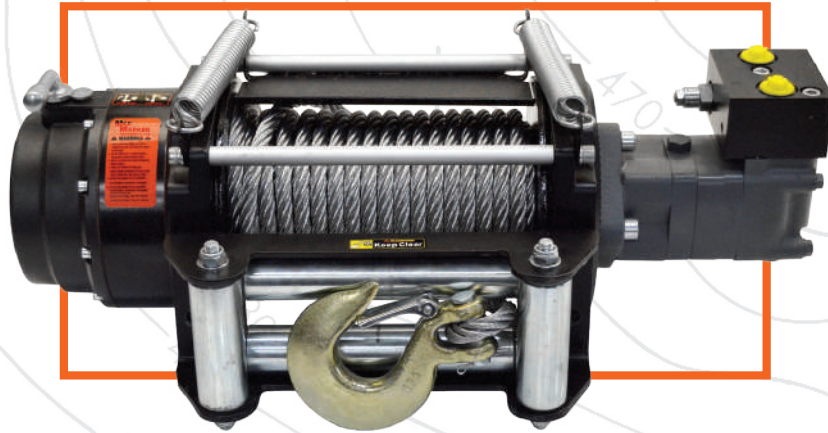
Layer of Cable	1	2	3	4
Line speed - low gear (FPM)	5.6	6.4	7.4	8.5
Rated pull (lbs.)	12,000	9,400	8,200	7,000
Line speed - high gear (FPM)	31	36	42	48
Rated pull (lbs.)	2,000	1,550	1,350	1,150



35 SERIES ADAPTER KIT IS REQUIRED  
SEE APPLICATION CHART ON PAGE 17

# 18K ONE SPEED HYDRAULIC WINCH

Our most powerful hydraulic winch, the 18K winch is designed for heavy duty, commercial, utility and wrecker applications.



70-58010C

## SPECIFICATIONS:

<b>Gear Train</b>	Planetary, hardened steel gear
<b>Gear Ratio</b>	36:01
<b>Motor</b>	7.6 cubic inch (124.5 cubic centimeters)
<b>Remote</b>	Not included
<b>Dimensions (LxWxH)</b>	25.8" X 8.4" X 9.6" (656 mm X 214 mm X 245 mm)
<b>Steel Cable</b>	1/2" X 75' (12.7 mm 22 m) Nominal breaking strength = 26,600 lbs
<b>Drum Size Diameter X Length</b>	4" X 9.9" (102 mm x 253 mm)
<b>Net Weight</b>	158.7 lbs (72 kgs)
<b>Bolt Pattern</b>	8 bolt pattern Outer 6.5" X 12" (165 mm X 304.8 mm) Inner 4.5" X 12" (114.3 mm X 304.8 mm)

## FEATURES:

- Automatic Load Holding Brake
- Heavy Duty Engagement Clutch
- Submersible
- Stainless Steel Tie Bars and Fasteners
- Mechanical Lock
- Corrosion Resistant
- 75' Steel Cable
- Roller Fairlead
- Free Spooling

## PERFORMANCE:

High Speed Performance Specification (max 2030 PSI or 140BAR) (max 103.4 bars)

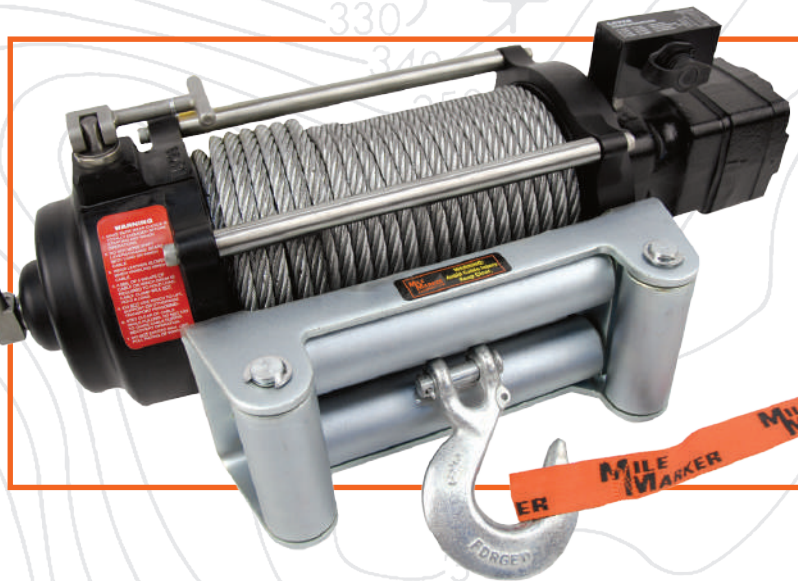
LAYER	Rated Line Pull		Line Speed				Cable Capacity	
			At 15 GPM (56.8.1 L/m)		At 20 GPM (75.71 L/m)		ft	m
	lbs	kgs	fpm	mpm	fpm	mpm		
1	18000	8165	14.9	4.5	17.4	5.3	21	6.4
2	14727	6680	18.2	5.5	21.3	6.5	46	14
3	12461	5652	21.5	6.6	25.6	7.8	75	22.9

First Layer Performance

Line Load	Pressure drop at 15 GPM (56.8.1 L/m)				Pressure drop at 20 GPM (75.71 L/m)	
	lbs	kgs	psi	bar	psi	bar
0	0	113	7.8	592	40.8	
3000	1361	345	23.8	763	52.6	
6000	2722	599	41.3	940	64.8	
9000	4082	867	59.8	1123	77.4	
12000	5443	1137	78.4	1311	90.4	
15000	6804	1446	99.7	1506	103.8	
18000	8165	1617	11.5	1706	117.6	

# LOW PRESSURE WINCH

Jeeps, mid sized trucks and sport utility vehicles – we designed a winch for you. If your vehicle produces less than 1500 PSI, you can still harness the legendary power of the Mile Marker hydraulic winch without upgrading the power steering equipment. The low pressure winch will pull 9,100 pounds at 1100 PSI.



75-50058C

## FEATURES:

- 2 Speed
- Integrated Solenoid Valve
- Submersible
- Stainless Steel Tie Bars and Fasteners
- Mechanical Lock
- Corrosion Resistant
- 100' Steel Cable
- Roller Fairlead
- Freespooling
- Handheld Remote Control

## SPECIFICATIONS:

Gear Train	Planetary
Gear Ratio	6:1
Motor	19.5 cubic inch
Remote	Illuminated joystick remote, 12'
Steel Cable	3/8" X 100' (nominal 14,400 lbs) (9.5 mm X 30.5 m)
Drum Size: Diameter X Length	2.5" X 9" (63.5 mm X 228.6 mm)
Net Weight	103 lbs (47 kgs)
Bolt Pattern	4 bolt pattern, 4.5" X 10" (114.3 mm X 254 mm)

## PERFORMANCE:

LAYER	LOAD	PSI	GPM
1	6700	900	3
1	7800	1000	3
1	9100	1100	3
1	10100	1200	3
1	11000	1300	3
1	12000	1400	3



35 SERIES ADAPTER KIT IS REQUIRED  
SEE APPLICATION CHART ON PAGE 17

# VEHICLE ADAPTER & VALVE KITS APPLICATION CHART

## 34 KIT FOR H SERIES WINCHES

### REMOTE SOLENOID VALVE

Includes: Remote control with 12' lead, all hoses and fittings, remote solenoid activated control valve, adapter kit for power steering pump (vehicle specific). Rated 7 gpm.

PART NUMBER:	APPLICATION:
<b>AM GENERAL</b>	
34-5010-17	Valve Kit - H1 (civilian)
<b>CHEVY/GMC/H2</b>	
34-5020-14	Valve Kit - '72-'87 GM C/K, '88-'91 RV Series
34-5010-15	Valve Kit - '88-'98 GM C/K, '99 Tahoe/Suburban Silverado, H2
34-5020-16	Valve Kit - '12-'16 GM 2500 & 3500 HD
34-5010-13	Valve Kit - GM S Series with 4.3L Vortec
<b>DODGE</b>	
34-5020-22	Valve Kit - Dodge Dakota 6 & 8 cylinder
34-5010-20	Valve Kit - Dodge Dakota 4 cylinder
34-5020-23	Valve Kit - '72-'93 Dodge Full Size
34-5020-24	Valve Kit - '94 Dodge Full Size
<b>FORD</b>	
34-5010-09	Valve Kit - '97 Ford F-150 Expedition
34-5020-35	Valve Kit - '05 Ford F-250/F-350/F-450/F-550 Excursion
34-5020-37	Valve Kit - '11 Ford F-250/F-350/F-450/F-550 Excursion
34-5010-34	Valve Kit - '99-'04 Ford F-250/F-350/F-450/F-550 Excursion
34-5020-06	Valve Kit - '72-'77 Ford Full Size
34-5020-07	Valve Kit - '78-'96 Ford Full Size, '97-'98 F-250 & F-350
34-5010-07H	Valve Kit - '78-'98 Ford Full Size (with hydro boost)
34-5020-04	Valve Kit - '83-'92 Ford Ranger, '90-'94 Explorer
34-5020-05	Valve Kit - '93-'96 Ford Ranger, '95-'96 Explorer
34-5020-10	Valve Kit - '02 Ford Ranger/Sport Trac
34-5020-38	Valve Kit - Ford '12 Super Duty
34-5020-38H	Valve Kit - Ford '12 Super Duty with hydro boost
<b>INTERNATIONAL</b>	
34-5010-18	Valve Kit - International Truck & Scout
<b>JEEP</b>	
34-5010-50	Valve Kit - Jeep Cherokee
34-5020-51	Valve Kit - Jeep CJ Scrambler
34-5020-55	Valve Kit - Jeep YJ, TJ, JK & Rubicon
<b>LAND ROVER</b>	
34-5010-45	Valve Kit - Land Rover Discovery
<b>NISSAN</b>	
34-5010-30	Valve Kit - '86-'93 Nissan (except Pathfinder)
34-5010-31	Valve Kit - '91-'95 Nissan Pathfinder, '94-'96 Truck
<b>TOYOTA</b>	
34-5020-41	Valve Kit - '79-'02 Toyota
<b>MEDIUM DUTY TRUCKS</b>	
34-5010-80	Valve Kit - (Comes with size 8 hose, pressure relief)

## 35 KIT FOR HI SERIES WINCHES

### INTEGRATED SOLENOID VALVE

Adapts power steering pump to HI Series winches. Includes vehicle specific power steering pump fittings and adapters.

PART NUMBER:	APPLICATION:
35-5020-17	Adapter Kit - AM General Hummer H1
35-5020-81	Adapter Kit - Chevy 5500
35-5020-16	Adapter Kit - '12 GM 2500 & 3500 HD
35-5020-15	Adapter Kit - GM Dodge International Chevrolet H2
35-5020-22	Adapter Kit - '03 & up Durango
35-5020-07	Adapter Kit - Ford up to '98
35-5020-34	Adapter Kit - '97-'04 Ford F-150, '99-'04 Ford
35-5020-10	Adapter Kit - Ford Sport Track Ford Ranger
35-5020-51	Adapter Kit - Jeep
35-5020-45	Adapter Kit - Land Rover
35-5020-31	Adapter Kit - Nissan
35-5020-41	Adapter Kit - Toyota
35-5020-38H	Adapter Kit - '12 Ford Super Duty with hydro boost
35-5020-38	Adapter Kit - '12 Ford Super Duty
35-5020-37	Adapter Kit - '11 Ford Super Duty
35-5020-35	Adapter Kit - '05-'10 Ford Super Duty
35-5020-36	Adapter Kit - '07 Ford F-550 only



**34 KIT**

VEHICLE SPECIFIC APPLICATIONS



**35 KIT**

VEHICLE SPECIFIC APPLICATIONS

# TOW WINCH



## HS9000

70-59000C

### SPECIFICATIONS:

<b>Gear Train</b>	Planetary, hardened steel gear
<b>Gear Ratio</b>	27:1
<b>Motor</b>	4.9 cubic inches (80.6 cubic centimeters)
<b>Dimensions (LxWxH)</b>	23.6" X 8.4" X 9.2" (600 mm X 214 mm X 235 mm)
<b>Steel Cable</b>	3/8" X 100' (9.5 mm X 30.5 m) (14,400 breaking strength)
<b>Drum Size Diameter/Length</b>	4" X 9.9" (102 mm X 253 mm)
<b>Net Weight</b>	78 lbs
<b>Bolt Pattern</b>	8 bolt pattern Outer 6.5" X 12" (165 mm X 304.8 mm) Inner 4.5" X 12" (114.3 mm X 304.8 mm)
<b>Duty Cycle</b>	Intermittent per SAE J706 section 6.2 565' (172 m)

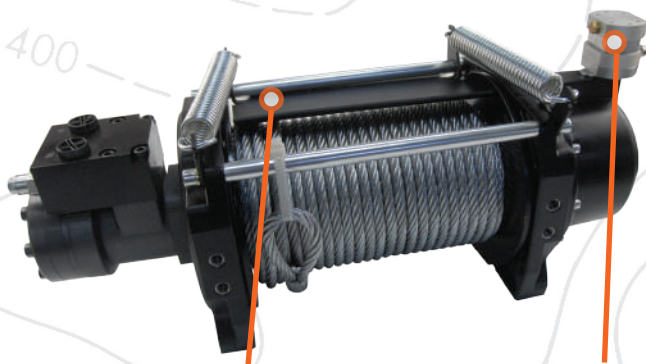
### FEATURES:

- Automatic Load Holding Brake
- Heavy Duty Engagement Clutch
- Submersible
- Mechanical Lock
- Corrosion Resistant
- Clockwise & Counter Clockwise Rotation
- Cable Tension Plate Sold Separately
- Clutch Kits Sold Separately
- Free Spooling

### PERFORMANCE:

Line Pull	Line Speed				
	lb	kg	fpm	mpm	flow L/m
0	0	27.3	8.3	59	
4000	2270	25.5	7.8	56.3	
8000	4086	26.2	8	56.2	
9000	5448	26.2	8	55.6	

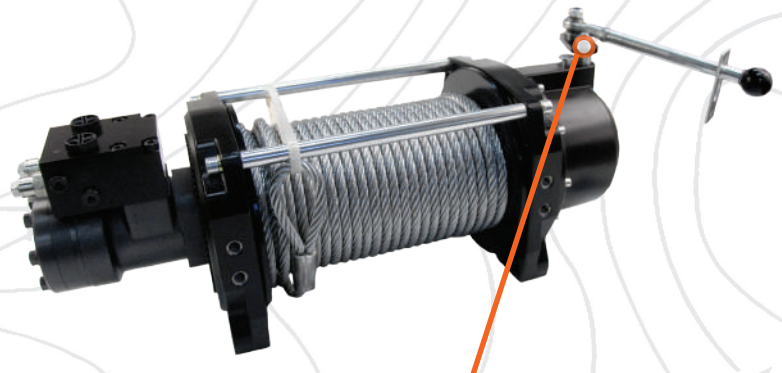




Winch Cable Tension Plate



Remote Pneumatic Clutch Kit



Remote Manual Clutch Kit

Winch Cable Tension Plate: 70591  
Remote Pneumatic Clutch Kit: 70593  
Remote Manual Clutch Kit: 70592

# MOUNTING SYSTEMS

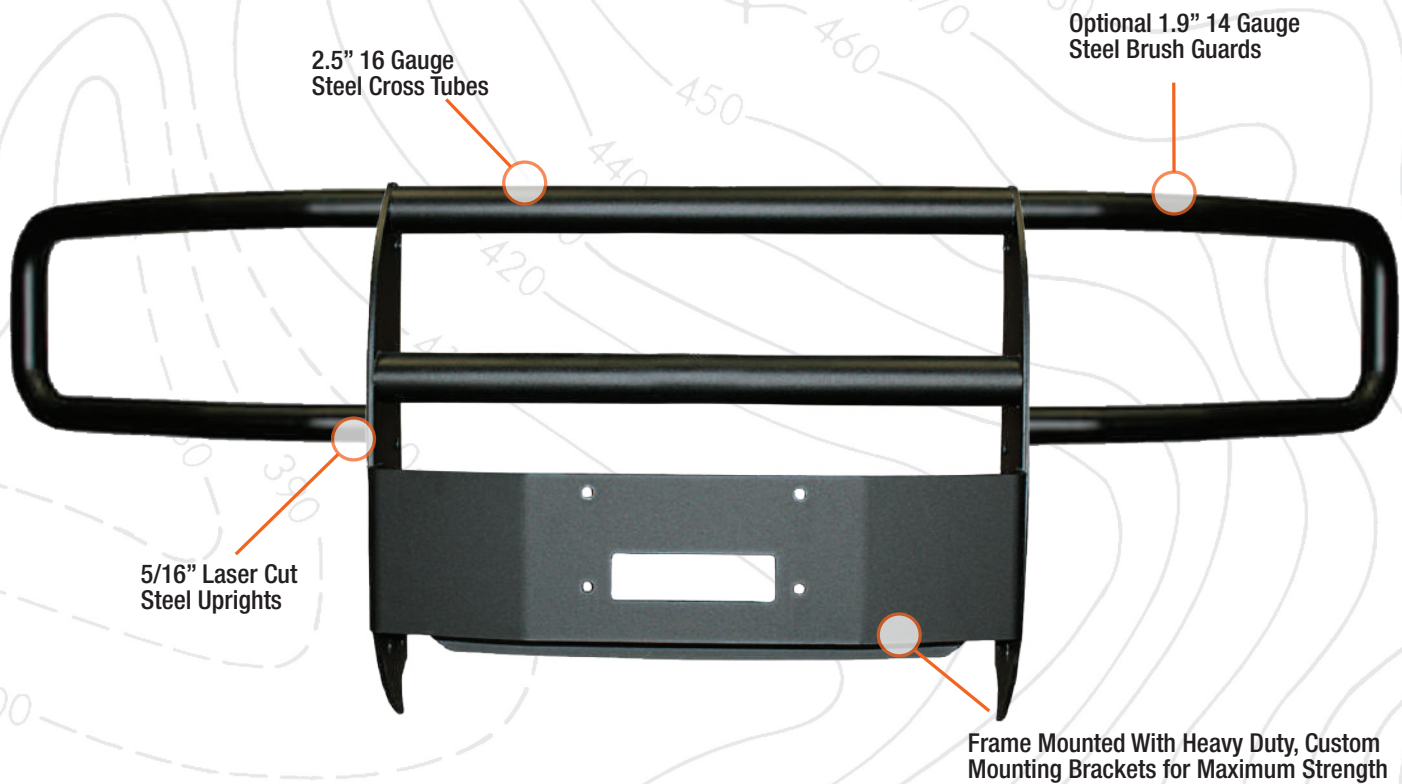
## ATV/UTV MOUNTS

The high quality choice for ATV and UTV winch mounts. Heavy duty steel construction and powder coating finishes enhance durability for these made to order custom mounts.



# TRUCK & SUV MOUNTS

Protect your vehicle and your winch with our custom built Xtreme II grille guards. All incorporate a 1/4 inch thick mounting steel plate and can accommodate up to a 15,000 pound Mile Marker winch. Optional "wraparound" brush guards can be added to finish out the protection. See chart on the next page for vehicle specific application guide.



Mount (With Brush Guard)

# TRUCK & SUV MOUNT APPLICATION GUIDE

Year	Make & Model	Part Number & Mount Model			
		Grille Guard (up to 15,000 Lb winches)	Grille Guard (up to 15,000 Lb winches)	Brush Guard	Brush Guard
		CHROME	BLACK	CHROME	BLACK
<b>CHEVROLET</b>					
'15-'19	Silverado 2500HD/3500 (7)	50-35752C	50-35752	50-26736C	50-26736
'11-'14	Silverado 2500HD/3500 (7)	50-35751C	50-35751	50-26751C	50-26751
'16-'18	Silverado 1500 (4) (7)	50-35746C	50-35746	50-26736C	50-26736
'14-'15	Silverado 1500 (4) (7)	50-35736C	50-35736	50-26736C	50-26736
'07-'13	Silverado 1500 (4) (7)	50-35735C	50-35735	50-26735C	50-26735
'07-'10	Silverado/Classic 2500HD/3500 Classic (1)	50-35738C	50-35738	50-26738C	50-26738
<b>DODGE</b>					
'10-'19	Ram 2500/3500 (3) (7) (10)	50-35669C	50-35669	50-26669C	50-26669
'07-'19	Ram 3500-5500 Chassis Cab (7)	50-35665C	50-35665	50-26663C	50-26663
'09-'18	Ram 1500 classic body (3) (7) (10)	50-35671C	50-35671	50-26669C	50-26669
'19- +	Ram new body		50-35673		
<b>FORD</b>					
'10-'13	Expedition (4) (6) (7)		50-35619		
'17-'19	Super Duty F250-550 (7) (8) (10)	50-35647C	50-35647	50-26647C	50-26647
'11-'16	Super Duty F250-550 (7) (10)	50-35644C	50-35644	50-26644C	50-26644
'08-'10	Super Duty F250-F550 (2) (7)	50-35642C	50-35642	50-26642C	50-26642
'09-'13	F150 (2) (4) (5) (6) (7)	50-35639C	50-35639	50-26639C	50-26639
'15-'17	F150 (7) (8) (9) (10)	50-35650C	50-35650	50-26650C	50-26650
'06-'08	F150 (1)	50-35637C	50-35637	50-26637C	
<b>GMC</b>					
'15-'19	Sierra 2500HD/3500 (1) (7)	50-35754C	50-35754		
'11-'14	Sierra 2500HD/3500 (1) (7)	50-35751C	50-35751	50-26751C	50-26751
'14-'18	Sierra 1500 (1) (4) (7)	50-35749C	50-35749		
'07-'13	Sierra 1500 (1) (4) (7)	50-35745C	50-35745		
<b>NISSAN</b>					
'05-'12	Pathfinder		50-35160		

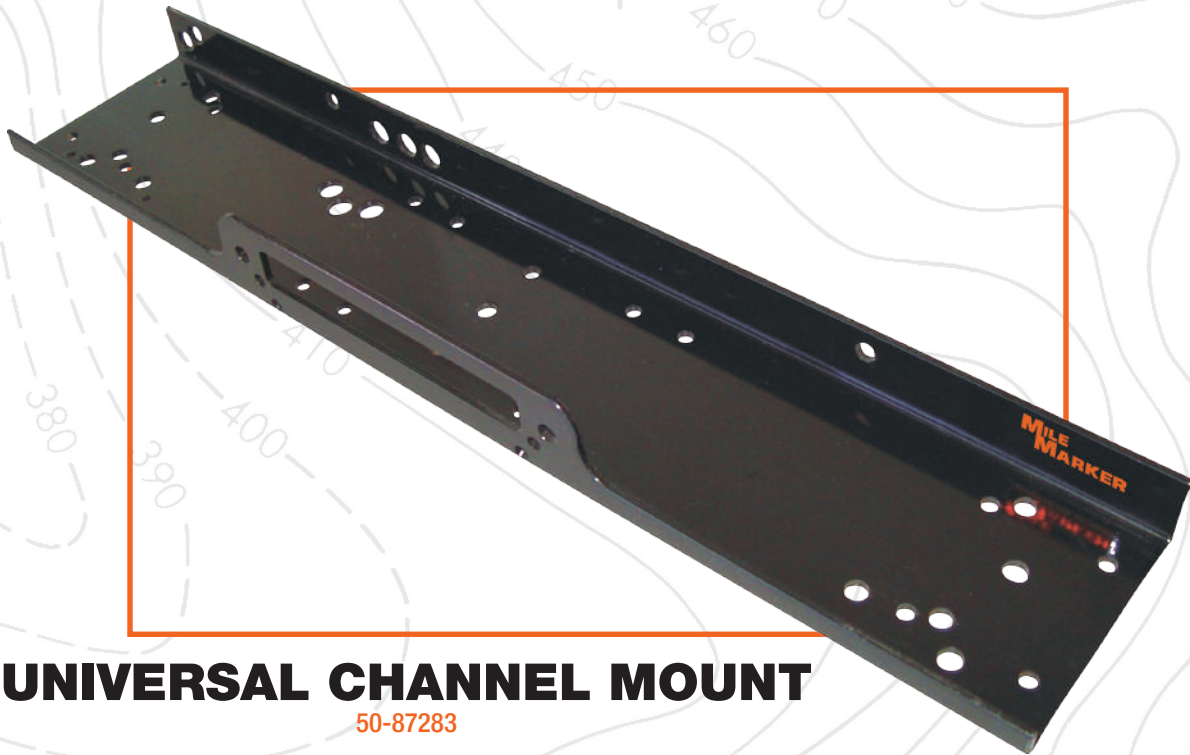
## Product Guide

1. Will not fit Denali Models or Denali Style Grilles
2. Will not fit Harley Davidson Models
3. Will not fit Ram Sport or Plastic Bumpers
4. Trimming may be required
5. Will not fit Lariat Limited
6. Will not fit F-150 EcoBoost
7. Interferes with front bumper sensors
8. May interfere with adaptive power steering
9. Will not work with 5.0 V8 Engines
10. Will interfere with OEM front facing cameras

# CHANNEL MOUNTS

## TRUCK/SUV MOUNTING SYSTEMS

The simple mounting solution for your vehicle, these mounts can be welded or bolted to adapt to almost any application. All are made from 1/4" high quality steel and finished with a black powder coat.



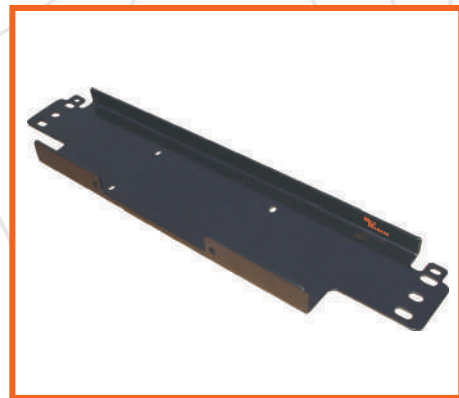
### UNIVERSAL CHANNEL MOUNT

50-87283



### TRAILER MOUNT

60-50015



### JEEP WRANGLER (TJ/YJ)

60-50059

# RECEIVER MOUNTS



## DETACHABLE MOUNTING SYSTEMS

Mile Marker's receiver mounts are detachable, providing versatility needed to move winches from back to front or from vehicle to vehicle. Simply add quick disconnect wiring and you're ready to go (see page 32 for quick disconnect kits).



FULL SIZE CRADLE MOUNT  
60-06495



RECEIVER MOUNT DESIGNED  
TO WORK WITH ATV/UTV WINCHES  
51-06496



ATV/UTV RECEIVER MOUNT  
51-4677

# RECOVERY GEAR

Choose the right kit for you.  
You can count on Mile Marker recovery gear to overcome the elements.



## Off Road Recovery Kit: 19-00100

Everything you need to get out of a pinch. In the event of a snap, our winch dampener directs the cable to the ground and keeps you safe. Doubling as the bag, it houses a 15' recovery strap, gloves, 20K snatch block with grease fitting, and two powder coated shackles.



## ATV/UTV Recovery Kit: 19-00105

Push your ATV or UTV to the limits. Includes: two powder coated shackles, gloves, 8K snatch block, and two 8 ft. recovery straps. Housed in a durable carrying case with strap.



# NEW!

## Soft Shackle Kit

19-52043

Soft Shackle Kit contains a black, non-woven bag, 1 dark gray soft (synthetic rope) shackle with a black nylon sleeve and an additional sleeve replacement.



## Orange Powder Coated Shackles

3/4" Shackle 60-50134

5/8" Shackle 60-50158

Orange powder coated shackles. Working load limit of 4.75 tons for the 3/4" shackles and 3.2 tons for the 5/8" shackles.



## Steel Hitch Receiver With D-Ring

60-65000C

Zinc coated, forged cast, solid steel hitch receiver fits standard Class III hitches with 2" receivers. Includes a 4-way hole system and a 3/4" orange shackle to meet any mounting needs.



## Recovery Gloves

(XL) 30-19-G2

Protect your hands from cable burns and rope burns. Gloves feature cowhide palms, with SBR padding and neoprene lines for breathability and functional dexterity.



## Recovery Strap 15' & 30'

3" X 15' 19315

3" X 30' 19330

15' and 30' Recovery Straps rated to 30,000 pound capacity.



## ATV Recovery Strap 8'

1" X 8' 19108

8' Recovery Strap rated to 7,200 pounds, with reinforced eyelet on each end.



## Tree Saver Strap 6'

4" X 6' 19406

Be conscious of your environment with this 6' Tree Saver strap. This Tree Saver Strap is rated to 50,000 pounds.



## Industrial Snatch Block 30K

60-50185

The Industrial Grade Snatch Block is rated up to 30,000 pounds of pull. Reduces the load on the winch by half to enable you to retrieve loads up to double your winch's capacity. Also allows winching from various angles. Features grease fitting and brass bushing.



## Heavy Duty Snatch Block 30K

60-50083

The Heavy Duty Snatch Block is rated up to 30,000 pounds. Reduces the load on the winch by half to enable you to retrieve loads up to double your winch's capacity. Also allows winching from various angles. Features grease fitting and brass bushing.



## ATV/UTV Snatch Block 8K

60-50105

This snatch block is rated up to 8,000 pounds. Reduces the load on the winch by half to enable you to retrieve loads up to double your winch's capacity. Also allows winching from various angles.



# WINCH ACCESSORIES



Wireless Remote  
7076

## WINCH WITHOUT WIRES

The plug & play wireless remote operates your winch from anywhere up to 50 feet away! Simply plug a receiver into your control box and you're ready to winch. Can adapt to most electric and hydraulic winches.



WIRELESS OPERATION UP TO 50 FT AWAY



ADAPTS TO MOST ELECTRIC WINCHES

## QUICK DISCONNECT KITS

Adding a quick disconnect kit allows for easy winch removal. Move your winch from the front to the back of your vehicle, or switch vehicles, whenever you need. Best used in conjunction with a receiver style mount.

### JEEP/TRUCK/SUV



Electric Front Quick Disconnect Kit  
76-93-54000

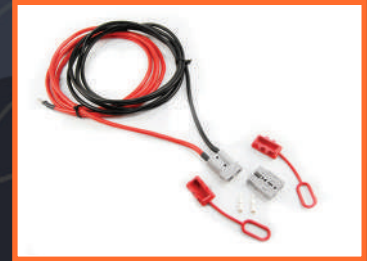


Electric Rear Quick Disconnect Kit  
76-93-53000

### POWERSPORTS



ATV/UTV Front Quick Disconnects  
93-53106



ATV/UTV Rear Quick Disconnects  
10' 93-53105 / 12' 93-53108

### HYDRAULIC



Hydraulic Front Quick Disconnect Kit  
70-54000



Hydraulic Rear Quick Disconnect Kit  
70-53000



Replacement Solenoid

PE2.5 & PE3.5 **77-50105-37**  
Full size winches **77-50141W-31**



Roller Fairlead Cover **8402**

This impact resistant cover protects your Mile Marker WH-10 roller fairlead from weather and debris while adding a finished look to the front of your vehicle.



Neoprene Winch Covers  
Wraps snugly around your winch for all weather protection

Fits most ATV winches **8505**  
Fits most full size winches **8506**



Roller Fairlead **WH-18**  
Works with 18,000 lb. winches



Roller Fairlead **WH-10**  
Universal roller fairlead works with 8000-15000 pound winches. Also fits winch mount bumpers.



Powersports Winch Rollers  
For winches 5000 pounds ONLY **WH-5**  
For winches 4500 pounds ONLY **WH-4**  
For winches 2500-3500 pounds **WH-2**  
For winches 2000 pounds ONLY **WH-1**



Aluminum Hawse Fairlead  
For use with synthetic rope (ATV/UTV) **19-52000**  
(PE5000) **19-52005**  
(Full Size) **19-53000**



Handlebar Remote **93-50106E**  
For use with Mile Marker ATV/UTV winches. Adjustable mount provides accessible control to your trail blazing ATV.



Electric & Hydraulic Remote **77-50141W-50**  
For use with Mile Marker electric winches with standard solenoids.



Winch Shackle Mount **60-12166**

Upgrades the conventional winch hook for a clean and sophisticated look on the front of the vehicle and an easy mount for your shackle. Mounts either a 5/8" or 3/4" shackle. Rubber construction will not rust or rattle in travel.



Replacement Cable  
5/16" X 100' **19-50010C**  
3/8" X 100' **19-50020C**  
Steel cable with removable hook.



Synthetic Rope  
**19-52038-100C \***  
3/8" X 92' Gray Rope Assembly (16,200 lbs. Min Break Force)  
**19-52516-100C \***  
5/16" X 92' Gray Rope Assembly (11,700 lbs. Min Break Force)  
**19-52014-50**  
1/4" X 50' Gray Rope Assembly (7,740 lbs. Min Break Force)  
**19-52316-50**  
3/16" X 50' Orange Rope Assembly (5,440 lbs. Min Break Force)

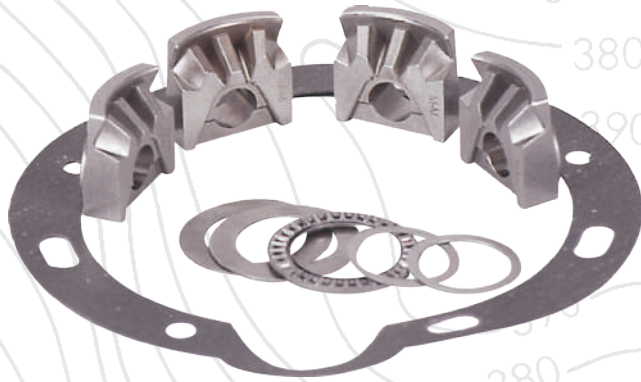


2000 lb. Winch Remote **76-50100-20**  
Fits most utility 12V winches

Attached hook included \*

# TRANSFER CASE CONVERSION KITS

For owners of full time 4WD vehicles, convert from 4WD to 2WD effortlessly. Conversion kits reduce wear and tear on your drivetrain, saving you money at the gas pump and providing years of trouble free service.



## FORD & GM 203 NEW PROCESS

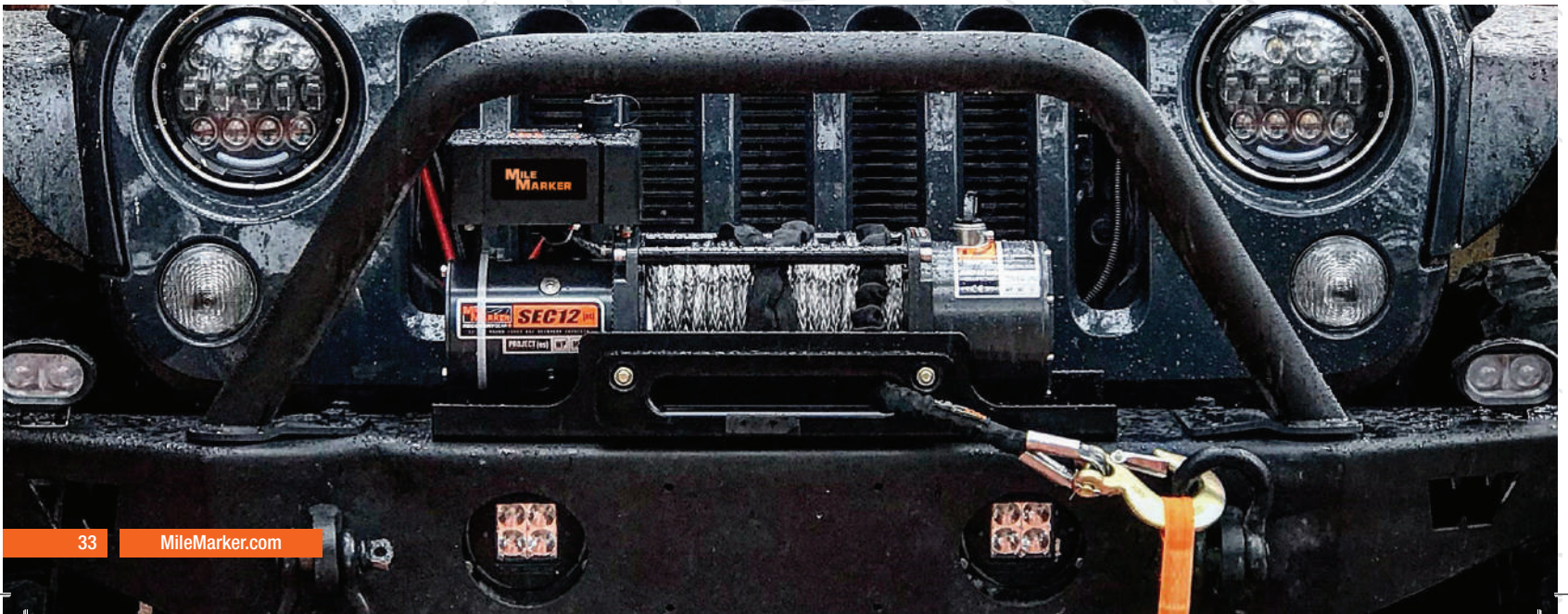
203 Transfer case without hubs **501**

With premium 1/2 Ton hubs  
(also fits '78-'79 3/4 Ton) **502**

With premium locking hubs  
Fits '73-'77 3/4 Ton **503**

With premium locking hubs  
1 Ton GM, Ford **505**

Bearing kit **701**



# PREMIUM LOCKING HUBS

Mile Marker hubs allow you to manually lock your vehicle into 4 wheel drive and are built to last through all weather and terrain. Use the two guides to choose the right hub for your vehicle and the correct conversion kit if needed (see next page for conversion kits)



104



302



426



428



449SS

## HUB SPECIFICATION GUIDE

All specifications must match exactly for hub to fit.

Part Number	Bolt Circle	# of Bolts	# of Splines	Axle O.D.
104		Internal	19	1.250
302		Internal	19	1.250
423	3.750	6	19	1.250
426	Internal	Internal	27	1.210
427	4.500	5	23	1.016
428	4.500	5	27	1.206
430	3.260	6	27	1.094
435	3.260	6	28	1.143
436	3.543	6	26	1.080
449SS		Internal	30	1.312

Part Number	Bolt Circle	# of Bolts	# of Splines	Axle O.D.
457	3.437	6	27	1.187
459SS		Internal	35	1.500
460	76	6	26	91
466	3.543	6	30	1.300
470	3.440	5	27	1.187
481	3.437	6	10	1.125
490	3.543	6	26	1.100
549	4.016	6	35	1.422
11034-01	3.960	8	30	1.312
95-37044	4.500	5	19	1.250



BUILT TO LAST



MADE FOR EXTREME TRACTION

# HUB APPLICATION GUIDE

Vehicle Model/Year	Part Number	Vehicle Model/Year	Part Number	Vehicle Model/Year	Part Number
<b>AMC/JEEP</b>		1 Ton Dana 50 & 60 Axle '76 - '04 (A,B) *	449SS	<b>KIA</b>	
Cherokee '74 - '87	104, 302	F-150 '59 - '81(A,B) ***	104, 302	Grand Sportage '97 - '02	460
CJ Universal '42 - '71	481	F-150 '82 - '96 (A,B) *	104, 302	Sportage '97 - '02	460
CJ Universal '72 - '86	457	F-250 '99 - '04	449SS	<b>MAZDA</b>	
CJ Universal '80 - '86	470	F-250 ex. F/T '59 - '98 ***	449SS	B3000 '01 - '08	426
Gladiator '74 - '87	104, 302	F-250 '05 - '20	549	B4000 '01 - '08	426
J10 Pickup '74 - '80	104, 302	F-350 '88 - '98 ***	449SS	Navajo '90 - '94 (A) *	428
J20 Pickup '74 - '77	423	F-350 '99 - '04	449SS	Pickup '94 - '97 (A) *	428
J20 Pickup '78 - '90	104, 302	F-350 Dana 50 & 60 Axle '76 - '04 (A,B) *	449SS	<b>NISSAN</b>	
Wagoneer '71 - '73	457	F-350 '05 - '20	549	1/2 Ton P/U '85 1/2 - '89	430
Wagoneer '74 - '87	104, 302	F-450 '88 - '98 ***	449SS	Frontier '98 - '04	435
<b>CHEVROLET/GMC</b>		F-450 '99 - '04	449SS	Hardbody (6 Bolt 27 Spline) '86 1/2 - '89	430
1/2 Ton Pickup (K10) '69 - '87	104, 302	F-450 Dana 50 & 60 Axle '76 - '04 ***	449SS	Hardbody '90 - '97	435
3/4 Ton Pickup '78 - '87	104, 302	F-450 '05 - '20	549	Pathfinder (6 Bolt 27 Spline) '86 1/2 - '89	430
Blazer '69 - '91	104, 302	F-550 '99 - '04	449SS	Pathfinder '90 - '01	435
Chevy 3/4 Ton (K-20) Pickup '60 - '77	423	F-550 '05 - '20	549	Xterra '00 - '04	435
Chevy IT (K-30) Pickup '77 - '87	449SS	Bronco '66 - '96 (A, B) *	104, 302	All Nissan (6 Bolt 28 Spline) - ALL	435
Chevy IT Dana 50 & 60 Axle '77 - '87	449SS	Bronco II '83 - '90 (A) ***	427	<b>SUZUKI</b>	
Jimmy '69 - '91	104, 302	Excursion '99 - '04	449SS	Samurai '82 - '98	436
Suburban '69 - '91	104, 302	Explorer '90 - '94 (A) ***	428	Sierra '82 - '98	436
<b>CHRYSLER/PLYMOUTH/DODGE</b>		Ranger '83 - '97 (A) ***	428	<b>TOYOTA</b>	
1/2T W-100 P/U '57 - '68	423	Ranger '98 - '00 (A) **	426	4 Runner '76 - '98 ***	490
1/2T W-100 P/U '69 - '93	104, 302	<b>GEO</b>		4 Runner 4x4 Pickup '86 - '94	490
3/4 Ton W-200 Pickup except full-time 4WD - ALL	423	Tracker (all)	436	Hilux '76 - '98 ***	490
1 Ton W-300 Series '76 - '89	11034-01	<b>INTERNATIONAL HARVESTER</b>		Land Cruiser '63 - '98 ***	490
1 Ton Dana 50 & 60 Axle '90 - '93	449SS	1/2 Ton Pickup '64 - '73	104, 302	Land Cruiser '76 - '85	466
RAM Charger '80 - '93	104, 302	1/2 Ton Pickup '74 - '75	457	Pickup '76 - '85	466
Trail Duster '80 - '93	104, 302	3/4 Ton Pickup '56 - '75	423	Pickup '76 - '98 ***	490
<b>FORD</b>		1 Ton HD. 200 with FA-20 Axle - ALL	11034-01	T-100 '93 - '98	490
3/4 Ton P/U w/Spline wheel hub (A,B) - ALL *	104, 302	Scout '61 - '71	481	<b>HEAVY DUTY</b>	
3/4 Ton w/3500 Axle ex. F/T '63 - '77	423	Scout II (ex. F/T) '72 - '80	457	35 spline Dana 70 hub	459SS
1 Ton Pickup '59 - '96 ***	449SS	Travel-all 1/2 Ton '64 - '73	104, 302		
		Travel-all 1/2 Ton '74 - '75	457		
		Travel-all 3/4 Ton '56 - '75	423		

## Nut Conversion Kits

104, 302	95-32720
427	95-27988
428	95-27997
449SS	95-32721
490	95-29918

- A. If OEM automatic hubs, a conversion kit is required to convert to manual hubs
- B. '73-'79 vehicles with full-time 4 wheel drive require a transfer case conversion kit
- \* Nut Conversion Kit required
- \*\* Not required on these model years 99-04
- \*\*\* Depending on application Nut Conversion Kit may be required

## MILE MARKER WARRANTY INFORMATION

### Mile Marker/Selectro hubs and Conversion Kits Limited Warranty

Mile Marker Industries warrants directly to the first purchaser that part numbers 427, 428, and all Selectro models will be free from defect in material and workmanship appearing under normal use and service for a period of one year.

Mile Marker Industries warrants directly to the first purchaser that part numbers 426 and 460 will be free from defect in material and workmanship appearing under normal use and service for a period of two years.

Mile Marker Industries warrants directly to the first purchaser that part numbers 104, 302, 423, 430, 435, 436, 449SS, 457, 459SS, 466, 470, 481, 490 and 549 will be free from defect in material and workmanship appearing under normal use and service for as long as said purchaser owns the Premium Locking Hubs.

Mile Marker Industries warrants directly to the first purchaser that all Mile Marker Conversion Kits will be free from defect in material and workmanship appearing under normal use and service for a period of one year.

Warranty registration must be submitted at [milemarker.com/warranty](http://milemarker.com/warranty) within thirty days of purchase by the end user. If you discover a hidden defect, Mile Marker will, as its option, repair or replace the product or necessary replacement parts at no charge to you, provided you remove the product from the vehicle and return it prepaid to Mile Marker Industries. If the product was purchased in the United States, the owner must contact our warranty department to get a Return Goods Authorization (RGA) number before returning the product. If the product was purchased outside the United States, the owner must return the product to the original place of purchase.

### Mile Marker Portable Winch Limited 1-Year Warranty

Mile Marker Industries warrants to the original purchaser that the mechanical components and electrical components of the Rhino Pull 1000 portable winch will be free of defects in material and workmanship for a period of one (1) year from the original date of purchase. Rechargeable batteries included with products are warranted to be free of defects in material and workmanship for a period of ninety (90) days from the original date of purchase. This Warranty applies only to the original purchaser of the Products.

### Mile Marker Industries Hydraulic Winch Limited Warranty

Mile Marker Industries warrants each winch when used in normal service against factory defects in materials and workmanship to the original commercial and recreational purchaser for the period of five years. New cable assemblies are warranted against defects in workmanship and materials when received by the retail purchaser. There is no applicable warranty for cable assemblies after initial use. Excluded from this warranty are the finish of the winch and any condition Mile Marker determines to have been caused by misuse or abnormal use. Warranty registration must be submitted at [milemarker.com/warranty](http://milemarker.com/warranty) within thirty days by the end user. Warranty submissions must reference winch serial number to be valid. Warranty will only be valid for the original purchaser of the winch and installed on the vehicle for which it was originally registered. The owner will be responsible for removing the winch and returning it to Mile Marker freight prepaid unless a determination is made that replacement parts can be sent out which will remedy the problem. Mile Marker will repair or replace any or all winch parts, which after inspection determines to be defective. If the product was purchased in the United States, the owner must contact our warranty department to get a Return Goods Authorization (RGA) number before returning the product. If the product was purchased outside the United States, the owner must return the product to the original place of purchase.

### Mile Marker Industries Electric Winch Limited Two Year Warranty

Mile Marker Industries offers a limited two year warranty to the original retail purchaser for each new Mile Marker electric winch, used as a recreational recovery winch only, against manufacturing defects in workmanship and materials on all mechanical components. Electrical components consisting of motors, solenoids, wiring, wire connectors and associated parts have a limited one year warranty. New cable assemblies are warranted against defects in workmanship and materials when received by the retail purchaser. There is no applicable warranty for cable assemblies after initial use. Excluded from this warranty are the finish of the winch and any condition Mile Marker determines to have been caused by misuse or abnormal use. Warranty registration must be submitted at [milemarker.com/warranty](http://milemarker.com/warranty) within thirty days by the end user. Warranty submissions must reference winch serial number to be valid. Warranty will only be valid for the original purchaser of the winch and installed on the vehicle for which it was originally registered. The owner will be responsible for removing the winch and returning it to Mile Marker freight prepaid unless a determination is made that replacement parts can be sent out which will remedy the problem. Mile Marker will repair or replace any or all winch parts, which after inspection determines to be defective. If the product was purchased in the United States, the owner must contact our warranty department to get a Return Goods Authorization (RGA) number before returning the product. If the product was purchased outside the United States, the owner must return the product to the original place of purchase.

For full warranty and general warranty procedure and policy visit [milemarker.com/warranty](http://milemarker.com/warranty)



2121 BLOUNT ROAD  
POMPANO BEACH, FL 33069 USA

MILEMARKER.COM  
INFO@MILEMARKER.COM  
800.886.8647



PN: 30-50020-21